

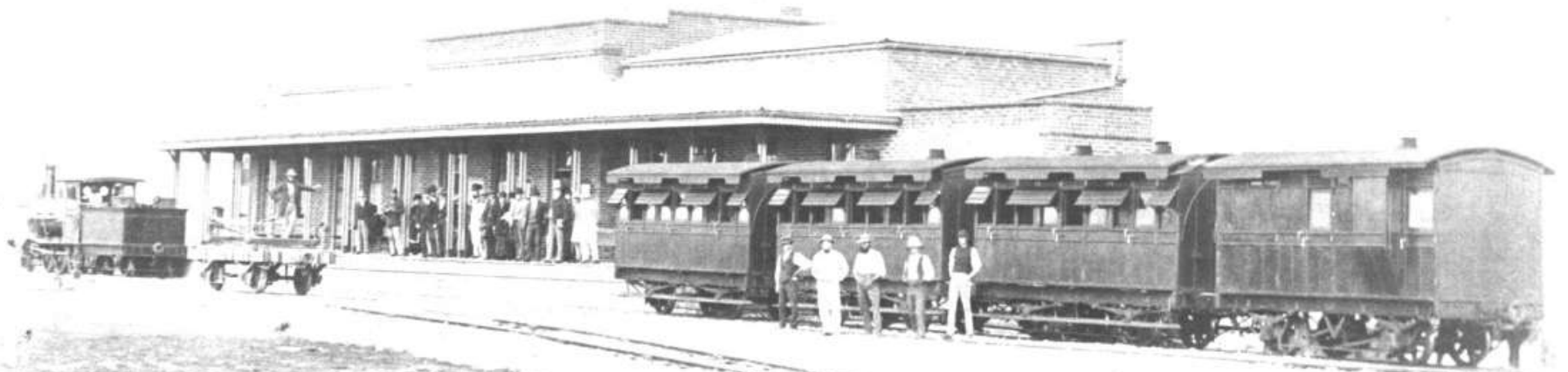
Railways in WA

- How railways have been essential in Western Australia's development
- WA – the first railways
- How railways have changed over the years – and why
- Railways today

First public railways

- The first public railways in WA were the first government railways :
 - Geraldton – Northampton 1879
 - Connecting a mine to port
 - Fremantle – Guildford 1881
 - The start of our passenger network, around Perth and even across Australia

Opening day, Perth, 1881

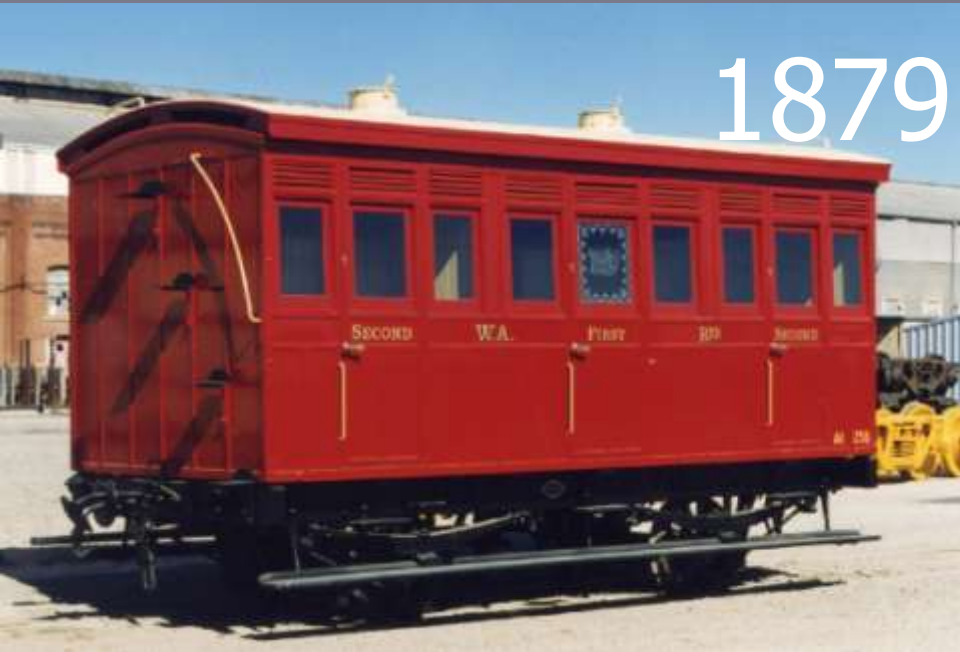


- Railways - 1881

- Railways – hardly started
- More than 50 years after settlement at Perth, the official population of our whole, vast state was still less than 30 000



We are lucky – we have some of the very earliest
WA trains intact and restored



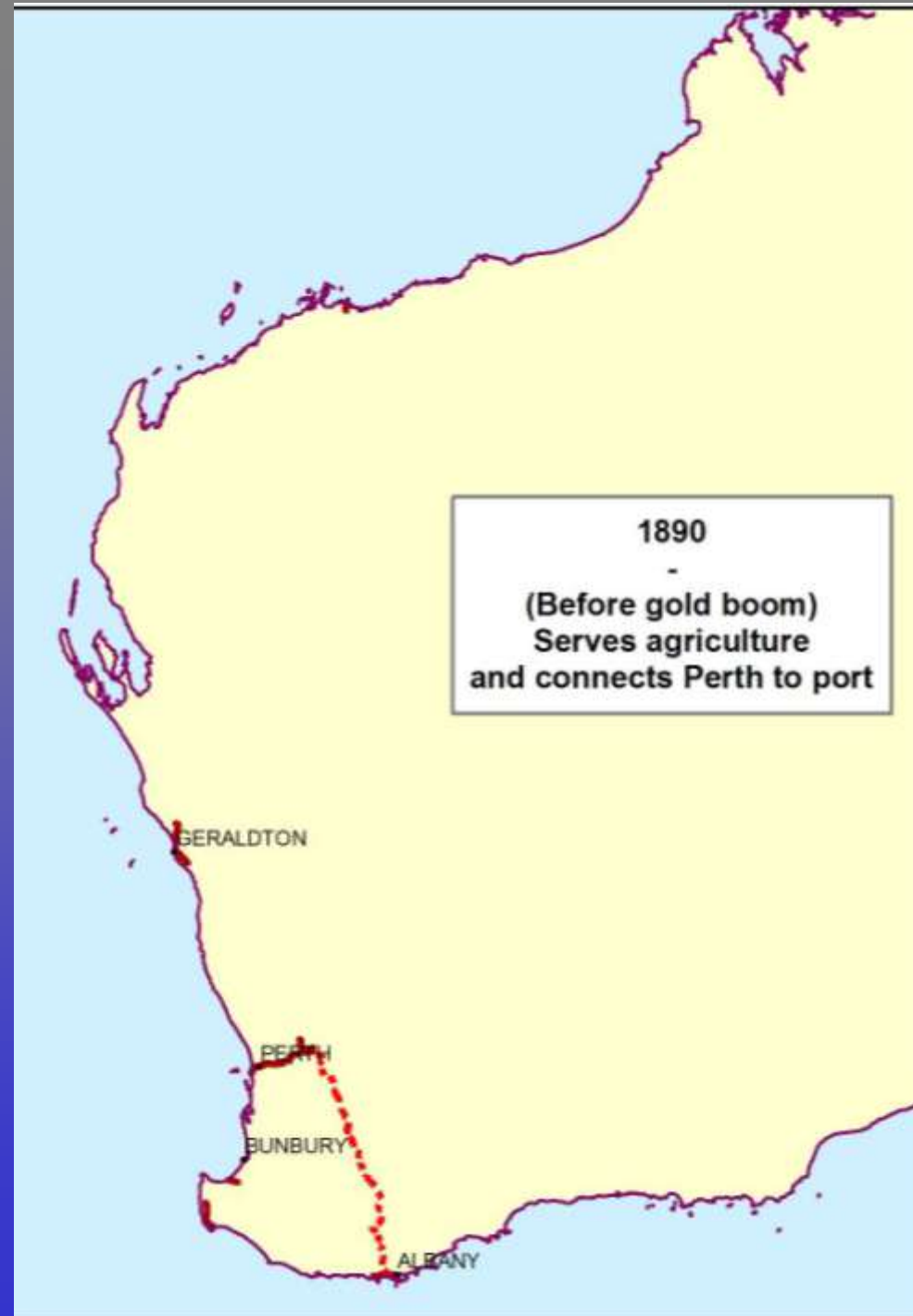
1879



1881

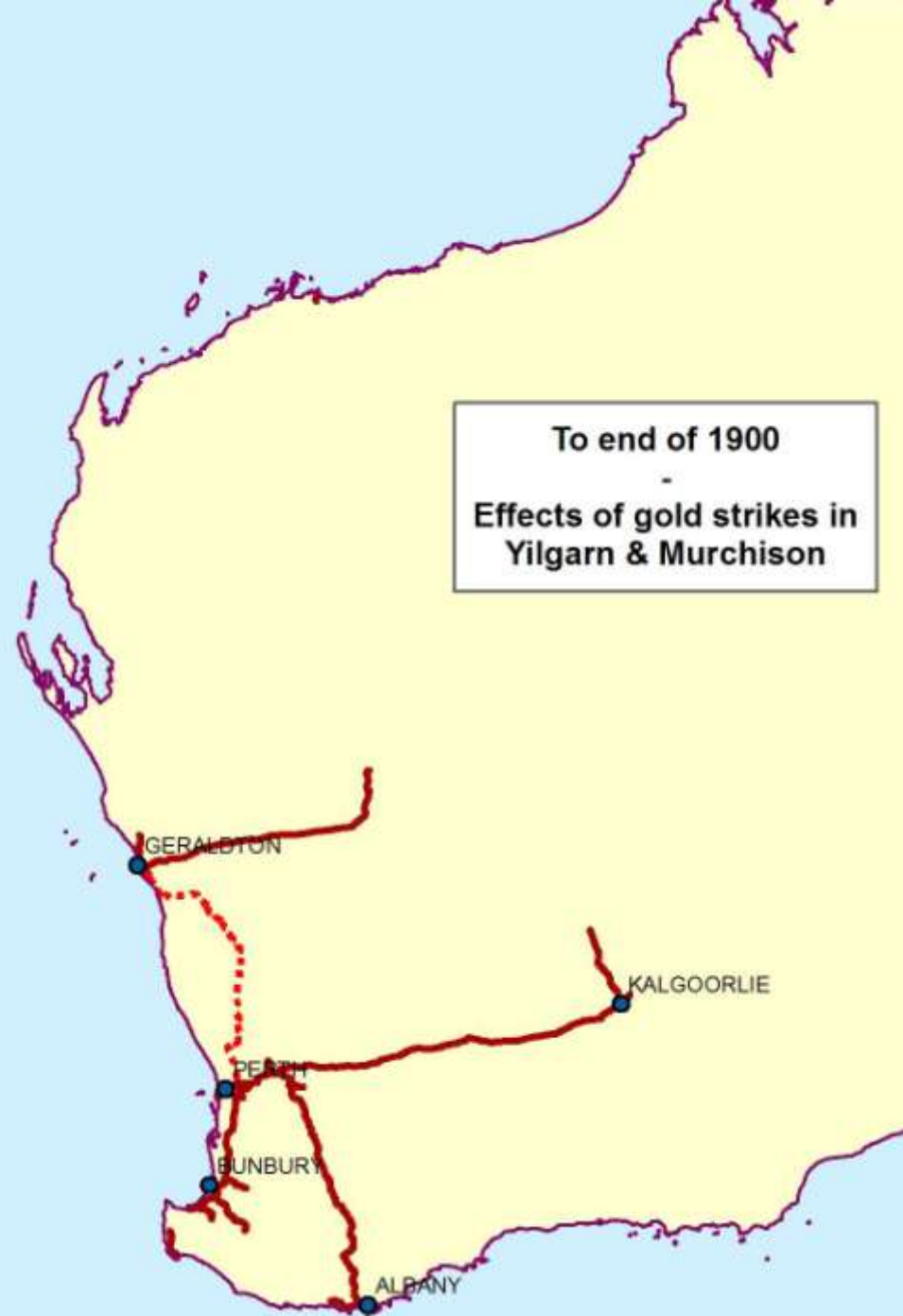
• Railways - 1890

- Before the gold rush
- Railways from Perth serve agriculture around York, Northam and Beverley
- Population still only 48500
- Private line connects Perth to Albany, which was the main port before C.Y.O'Connor worked out how to open Fremantle harbour



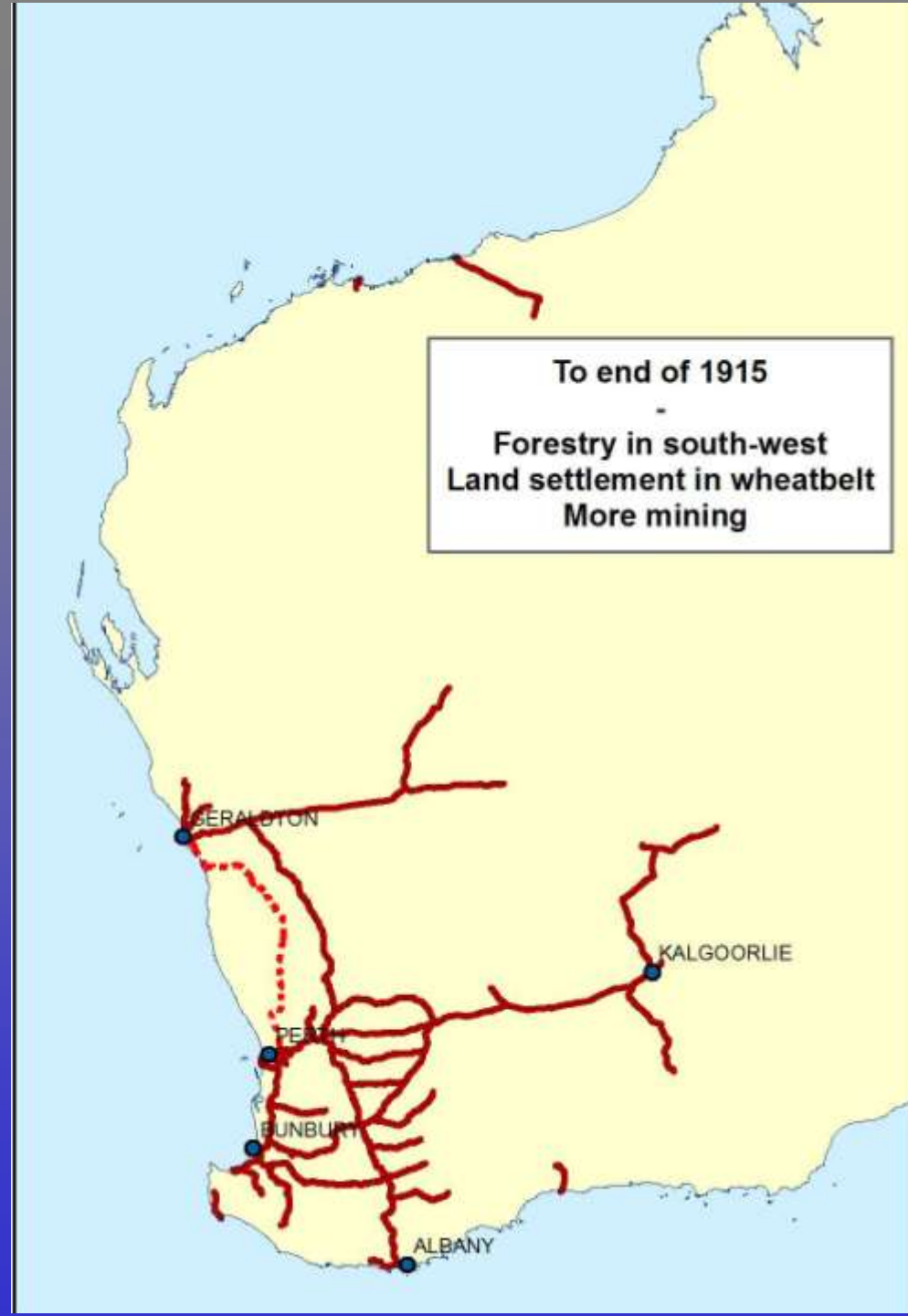
• Railways - 1900

- Gold rush has come!
- Effects of gold strikes in Eastern Goldfields and Murchison
- Albany line sold to government, but Midland private line opened (the red dashed line)
- Population now 180 000



• Railways - 1915

- Enabling development of Western Australia:
- Forestry in south-west
- Land settlement in what has become the wheatbelt

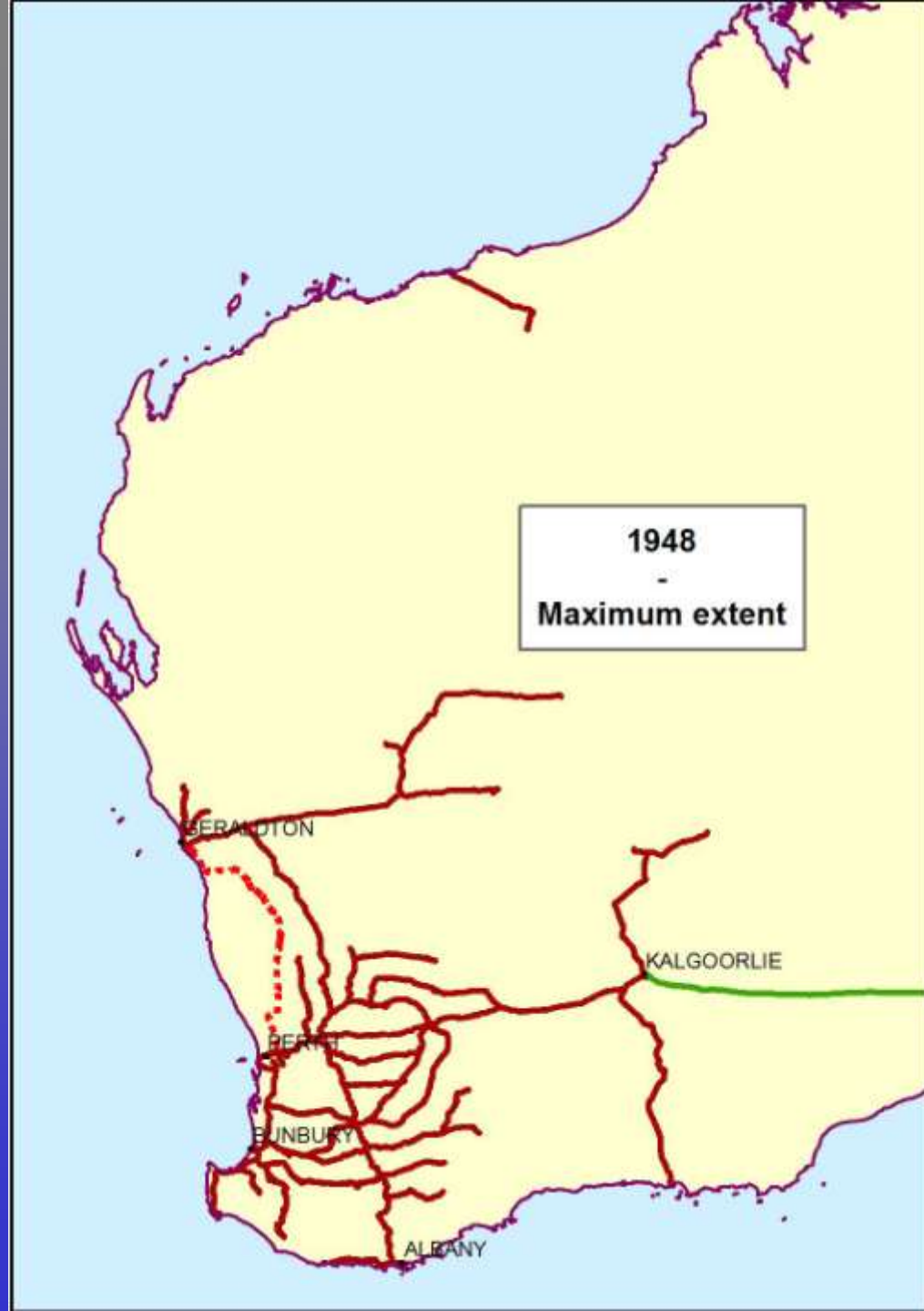


Early train in the country



• Railways - 1948

- Railways have been built throughout the agriculture areas – the only way to get wheat and other produce to markets
- Before we all bought motor cars, trains also carried people ,to many small towns in country areas
- The green line is the trans-Australian railway, connecting Western Australia to the rest of our nation – but on a different gauge



Connecting WA to the rest of Australia

- From 1917 you could travel to Sydney by train, BUT
 - Change in Kalgoorlie
 - Change in Port Augusta
 - Change in Terowie
 - Change in Adelaide
 - Change in Melbourne
 - Change in Albury
- Why was that necessary ?

1917

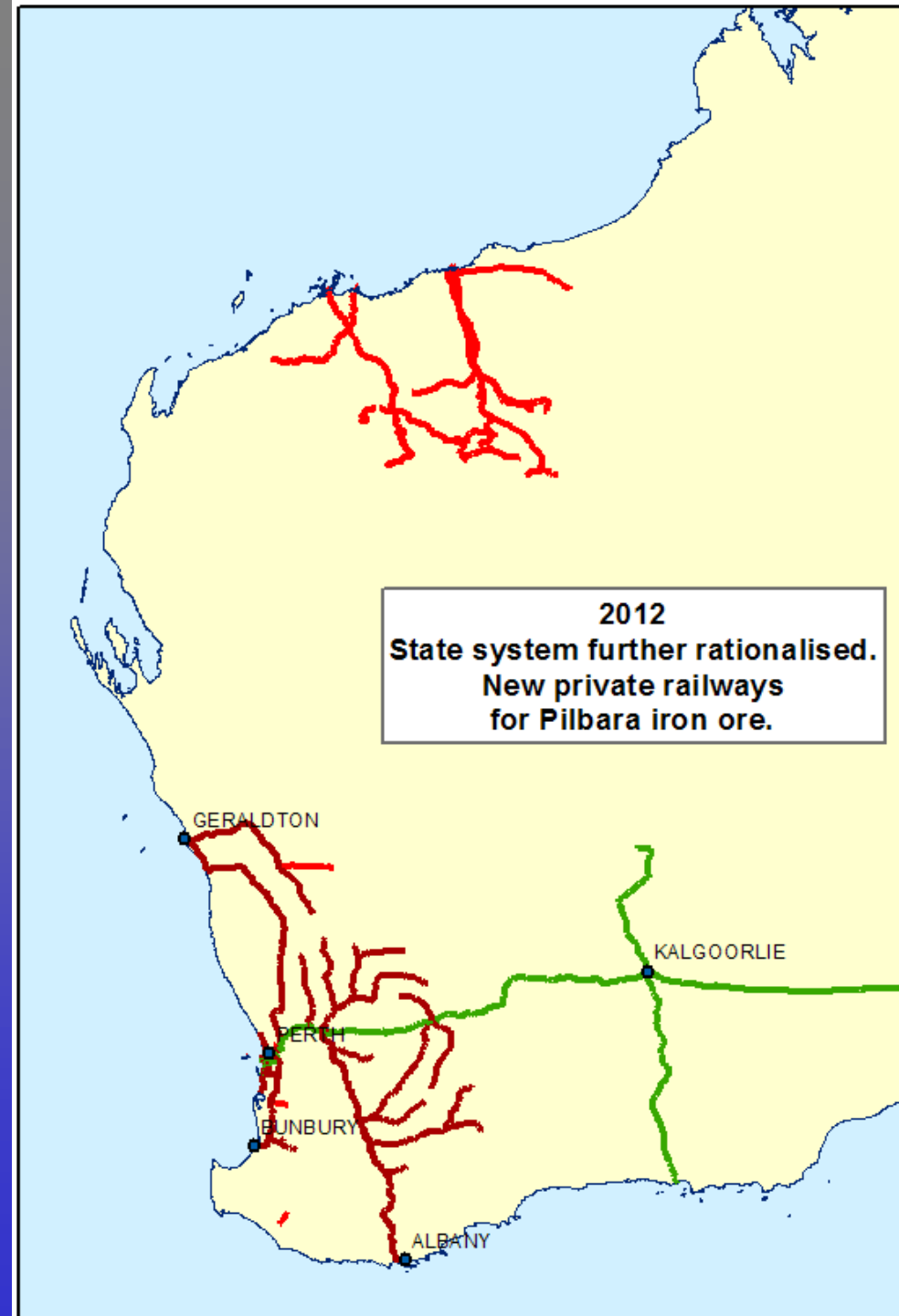


Think of the weather – crossing the middle of Australia without airconditioning

• Railways – now

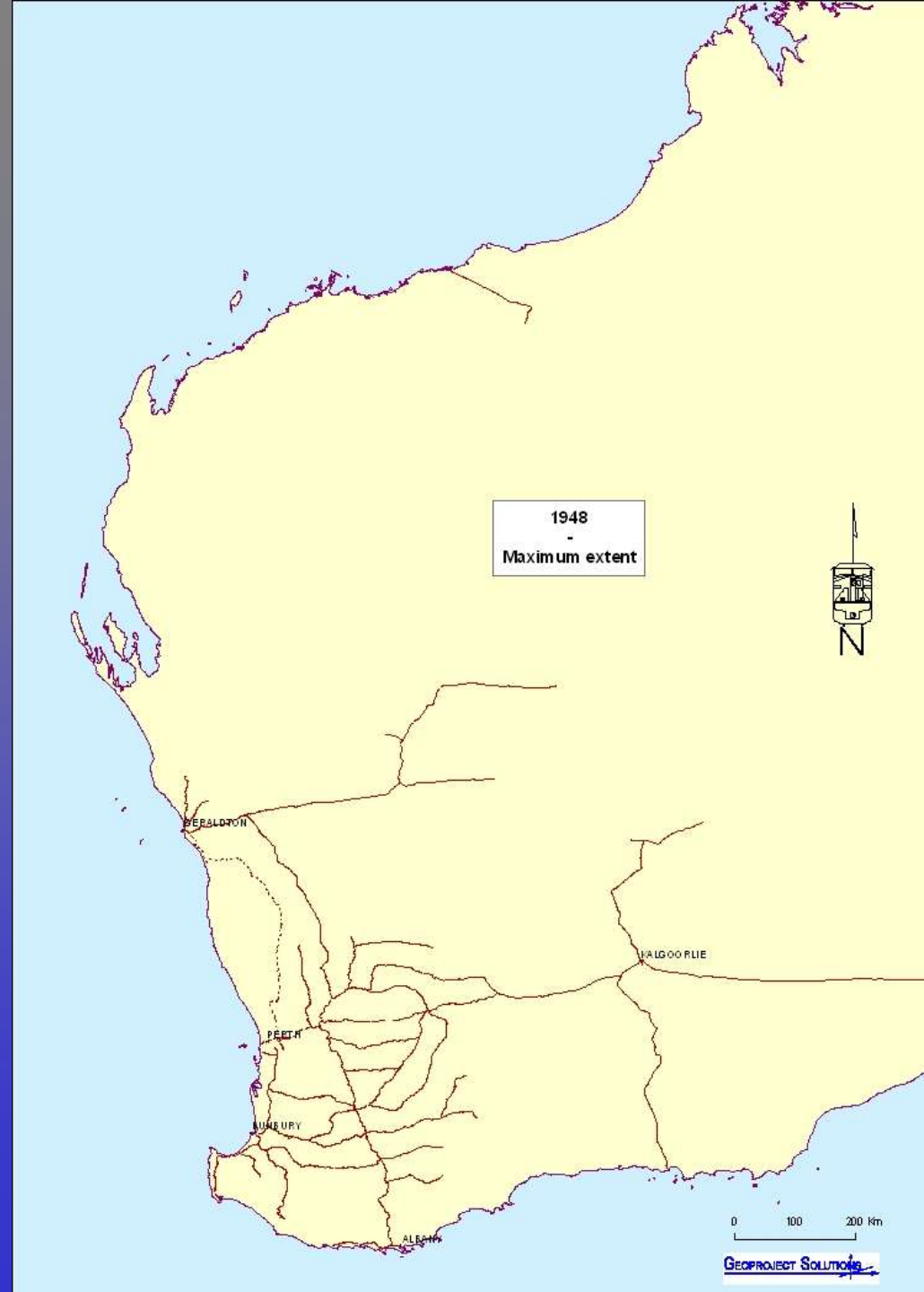
- Standard gauge interstate line very busy
- Iron ore lines carry millions of tonnes of exports to ports

- Green lines are standard gauge (1435mm)
- Brown lines are narrow gauge (1065mm)
- Red lines are private railways for iron ore transport



- What were all those railways doing in WA ?

- Look back at 1948, when government lines throughout agriculture areas





Apart from passengers, in 1948 the other main responsibility of railways was goods movement – especially wheat

See how the railways had opened up country for agriculture



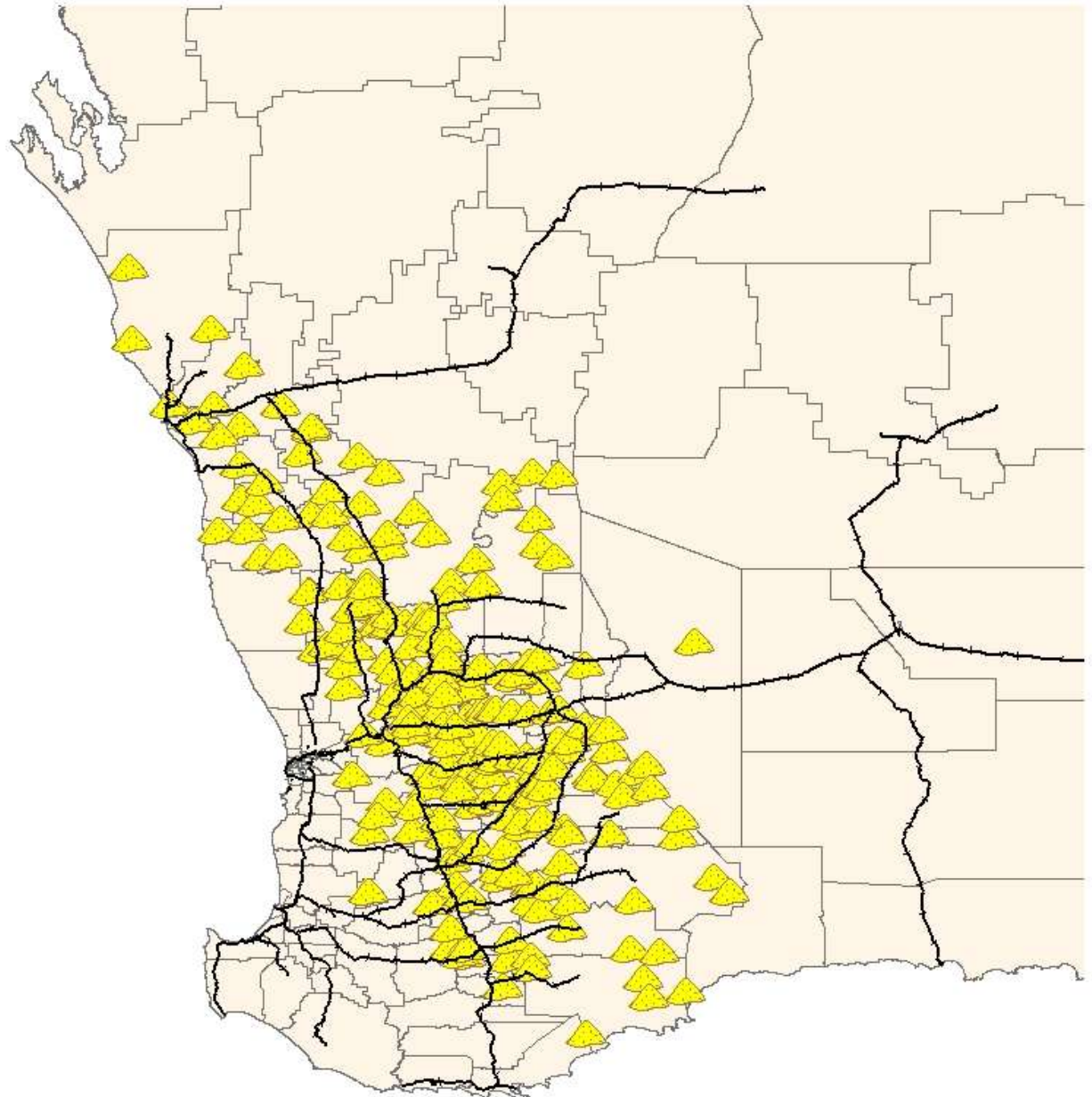
Grain production Western Australia 1949

Grain growing by LGAs

-  5000 tonnes grain grown
-  Rail open in 1949

Total WA grain production 1949: 1.1m tonnes

Grain distribution calculated
from wheat and oats bushels for
Local Government Areas,
as at 1949




Notes:

Grain production for 1949, per LGA, from
Little, R.J. (Government statistician):
"Statistical Register of Western Australia for 1948-49", Perth WA, Government Printer 1952.



Grain production Western Australia 2006

Grain growing (tonnes)

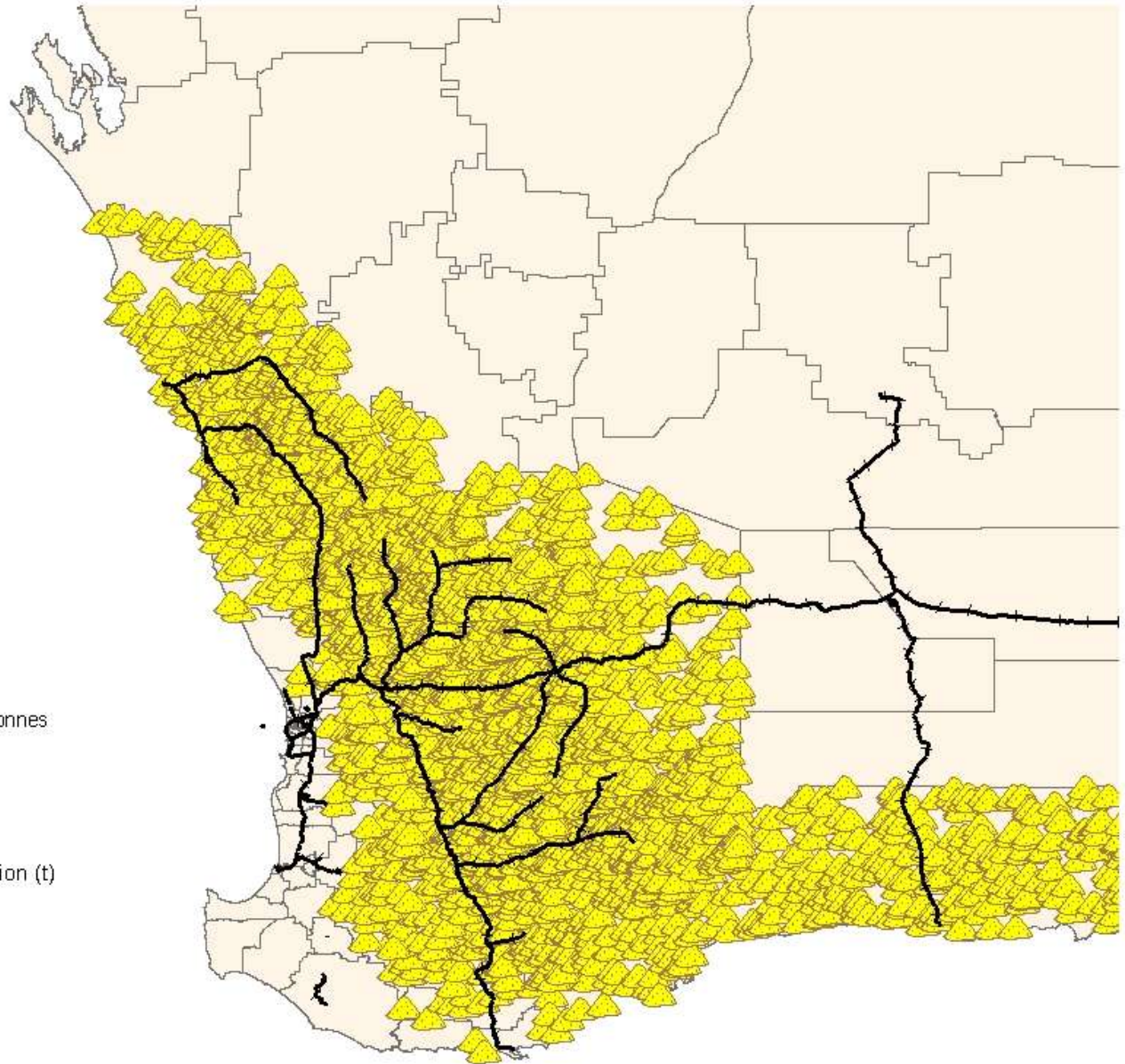
-  5000 tonnes grain grown
-  Rail open in 2006

Total WA grain production 2006: 12,143m tonnes

Grain distribution calculated from
Cereal crops - Cereals for grain - total production (t)
for Statistical Local Areas,
2005/06

Notes:

Grain production for per LGA, from
ABS publication
"71250D0028_200506 Agricultural Commodities:
Small Area Data, Australia, 2005-06"

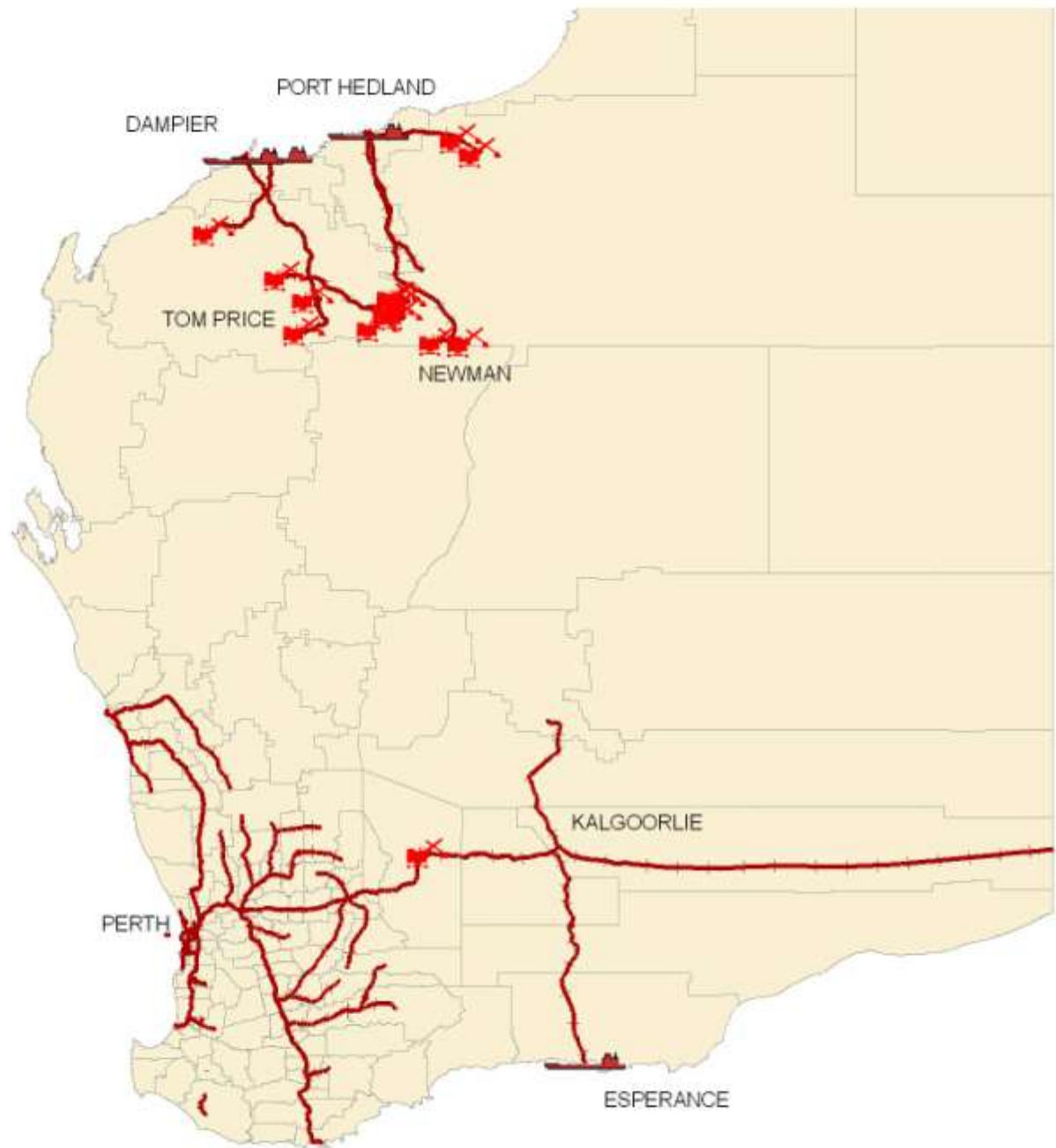


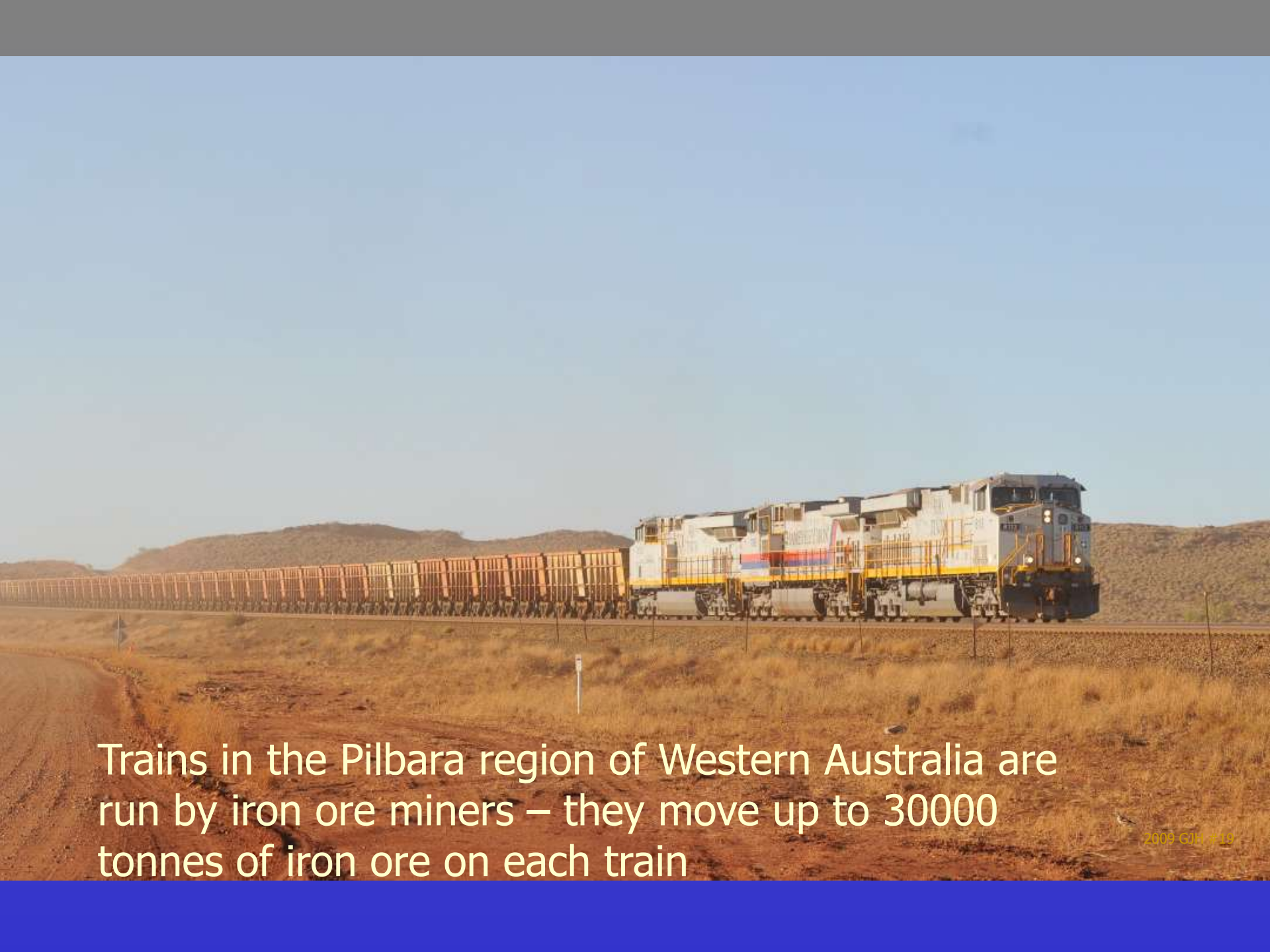


IRON ORE MINING AND PORTS

Mines and ports

-  Iron ore mine
-  Port
-  Rail_major





Trains in the Pilbara region of Western Australia are run by iron ore miners – they move up to 30000 tonnes of iron ore on each train

Come out and see us some time!

Thank you

Railway Museum
136 Railway Parade, Bassendean

www.railheritagewa.org.au